

Digital Full Colour Production Presses

Ricoh Pro™ C7200s Series

✓ Copier ✓ Printer ✓ Scanner

RICOH
imagine. change.

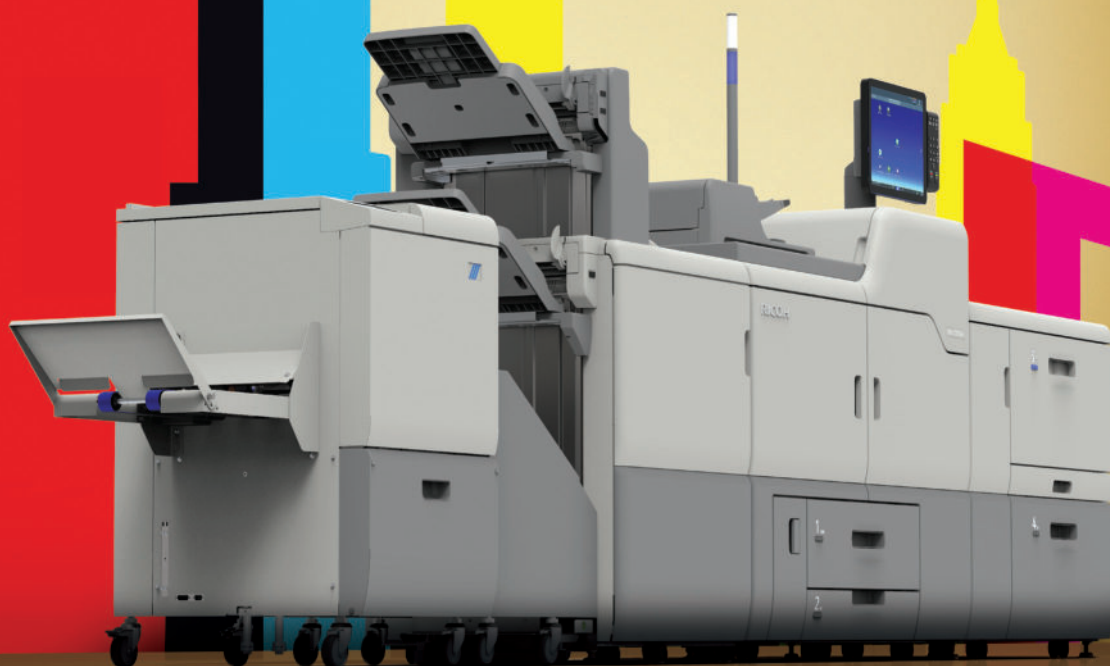


**Ricoh Pro
C7210s**

95
ppm
Black & white
Full colour

**Ricoh Pro
C7200s**

85
ppm
Black & white
Full colour



The best just got better

To stay ahead, you need performance and value with no compromise, which the Ricoh Pro C7200s Series delivers. The high speed, four colour digital presses deliver outstanding image quality, ease of use and high productivity at an affordable price.

The Ricoh Pro C7200s Series incorporates a number of advances, including a super-sized touchscreen operation panel, enabling you to access the full machine configuration, including tray settings, at the touch of a screen. With no compromise on speed at all paper weights, the ability to print on a wider range of media including textured card, metallic paper and carbonless paper, the Pro C7200s Series produces a look and feel comparable to offset.

Outstanding image quality

Ricoh's production printers produce repeatable colour output with a look and feel that is comparable to offset. The imaging system employs VCSEL technology (vertical cavity surface emitting lasers), ultra-fine PxP chemical toner and an oil-less fusing system to produce beautifully rendered outputs.

The PxP toner has a wide colour gamut, enabling the printers to produce vivid lifelike colours with smooth tonal gradation.

- Print quality that is comparable to offset.
- Vivid lifelike colours, smooth tonal gradation and fine lines.
- Low toner pile height minimises glossiness.
- Precise front/back registration with added automatic quality control.

Productive performance

Production printing operations require reliable and productive technology that allows you to produce high quality print outputs at an affordable cost. Bring more of your print in-house and gain more control over your print outputs.

- Print output speed at up to 85 or 95ppm (A4).
- Full engine speed maintained at all paper weights.
- Auto duplex long sheet printing up to 700mm. Simplex up to 1260mm.
- Trained operator replaceable units for ultimate uptime.
- Easy jam removal with animated guidance and LED lights.
- To maintain productivity, paper and toner can be replenished on the fly.
- Tray switching, twin stackers and print scheduling feature support out of hours production.



Extensive media support



The Pro C7200s Series supports media weights of 52 to 360gsm at full rated speed and will print onto a wide variety of stock, including gloss and matt coated offset media, textured card and carbonless paper.

Further expanding the range of potential applications, the new production printers also support duplex printing on media up to 700mm and long sheet stock up to 1260mm in simplex.

The onboard media library, which contains automated settings for a variety of branded media types, simplifies set-up and ensures reliable performance.

- Supports media weight of 52 to 360gsm.
- Gloss and matt coated media, textured card, envelopes and carbonless paper.
- Extensive onboard media library contains settings for a variety of branded media.
- New media management tool (MMT) allows settings to be shared between devices.
- Optional decurl unit eliminates curl associated with short grain and lightweight media.

Tailored to your needs with new options

The systems can be tailored to meet all your production needs. With a modular concept you can add a variety of inline feed and finishing singular options to meet your workflow demands. The optional vacuum feed LCT supports a broad range of media, including media up to 360gsm.

Finishing options include a high capacity stacker, staple finisher, a booklet maker and trimmer unit, a multifolding unit that supports six fold patterns, a high capacity interposer, a GBC StreamPunch, inline ring and perfect binding systems and a variety of professional Plockmatic booklet making systems.

The new options are introduced to meet a variety of application needs:

- A New inline finishing systems are capable of 30 sheet booklets including coated media covers.
- A New inline face trimmer and square back capabilities combine in an easy to use system.
- A New Plockmatic booklet maker allows you to produce A4 landscape booklets of up to 50 sheets.



Multi-platform support

The Pro C7200s Series support a variety of Digital Front Ends. Ricoh's integrated GWNX controller provides PCL 5c/6 print functionality as standard and Adobe Postscript 3 is offered as an upgrade option.

To support clients with Fiery workflows, powerful EFI print servers are available. Based on the new Fiery FS350 Pro system software, the colour Digital Front Ends E-86A and E-46A lever the latest Fiery technology enhancements to deliver a fast performance and outstanding colour out of the box.

The TotalFlow Print Server offers an Adobe PDF Print Engine (APPE) based Digital Front End perfect for corporate print rooms handling either PDF or IPDS / AFP data streams (option). Clients can add optional onboard makeready tools powered by TotalFlow Prep offering a highly functional application for imposition, composition and page level editing.

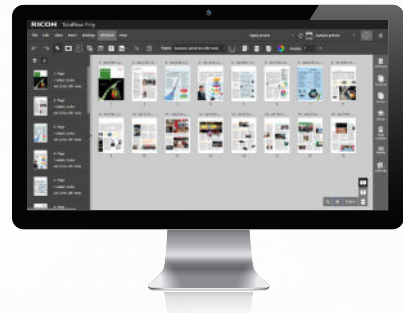


TotalFlow Prep

TotalFlow Prep provides a highly functional, easy to use make-ready application for corporate print rooms and copy shops.

TotalFlow Prep offers powerful tools for imposition, composition, scanned copy correction, page level editing and more. Repeat tasks and jobs can be automated via hot folders and traditionally complex tasks such as adding tabs, bleed edge tabs and subset finishing can quickly be added, previewed and managed for output with ease.

TotalFlow



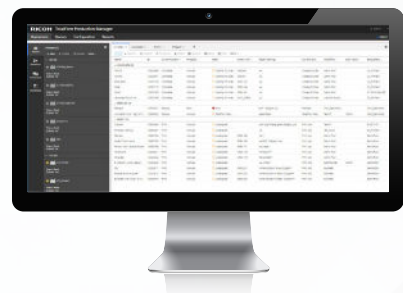
TotalFlow Production Manager

TotalFlow Production Manager offers a complete job management solution for corporate print rooms and copy shops where there is the requirement to manage and queue jobs for output across multiple engines or where there are large quantities of jobs to manage to meet challenging schedules and deadlines.

TotalFlow Production Manager allows job status, job priority and media libraries to be managed from a single solution complete with optional advanced imposition and integrated pre-flight.

TotalFlow Production Manager and **TotalFlow Prep** can be used with a variety of Digital Front Ends including Ricoh GWNX, EFI Fiery; and a custom connector offers connectivity to third party solutions.

TotalFlow



New options

Inline Finisher

- Enhanced saddle-stitching capabilities with max 30 sheets (80gsm).
- Support up to 350gsm.
- More robust finisher with non-stop operation.
- Increased stack capacity with dual shift trays (1000 sheets, 3500 sheets).



Air Assist Interposer

- Coated paper can be fed continuously by air assisted feeding from the leading edge.
- Support up to 350gsm.
- 2-trays 200 sheets per tray.



Plockmatic Square Back Trimmer

Square Back Trimmer is a face trimmer and square fold unit.

- Makes professional 120-page booklets.
- Inline system is fully integrated with Ricoh booklet maker.
- Offline mode enables 2-sided trimming of the booklets, top and bottom.
- The Square back feature offers you more professional-looking documents.



Plockmatic Long Sheet Booklet Maker 5000

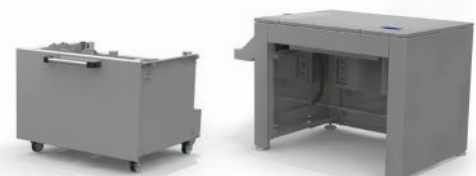
A long sheet booklet maker fully integrated with the Ricoh press.

- Enables A4 sized landscape booklets, professional 200 page (or 140 page) stapled or stitched and square folded booklets.
- Supports up to 350 gsm media coated or uncoated for a wide variety of applications.
- Available with stitch heads for heavy production sites.
- Exclusive features includes square back and bleed trim capabilities.



BDT VX370-1280 Long Sheet LCT

- BDT vacuum-free Tornado technology for outstanding feeding and media separation.
- Media format range: Width: 210–364mm/Length: 210 –1280mm.
- Robust sheet metal design to accommodate a stack height of up to 500mm.



Ricoh Pro™ C7200s Series

SYSTEM SPECIFICATIONS

GENERAL

Model Name:	Pro C7200, Pro C7210, Pro C7200s, Pro C7210s
Technology:	4-drum dry electrostatic transfer system with internal transfer belt
Fusing:	Oil-less, belt fusing method
Print Speed:	Pro C7200 and Pro C7200s - 85ppm Pro C7210 and Pro C7210s - 95ppm
Resolution:	VCSEL 2400x4800dpi
Warm Up Time:	Less than 300 sec.
Dimensions (WxDxH):	Pro C7200 & Pro C7210 - 1320 x 910 x 1218mm Pro C7200s & Pro C7210s - 1320 x 910 x 1230mm
Weight:	Pro C7200 & Pro C7210 - Less than 560kg Pro C7200s & Pro C7210s - Less than 580kg
Power Source:	220-240V, 16A x2, 50/60Hz
Power Consumption:	Less than 5,000W
Life:	14,400,000 A4 pages or 5 years

MEDIA HANDLING

Paper Input Capacity:	1st Tray (std) 1,000 sheets x2 (Tandem) 2nd Tray (std) 500 sheets Optional: A3/DLT/LCT 3rd Tray 1,000 sheets 4th Tray 2,000 sheets 5th Tray 1,000 sheets Optional: Vacuum Feed LCT All Trays 2,200 sheets each (Trays 3 - 8)
Optional:	Bypass Tray 500 sheets
Maximum Printable Area:	323 x 480mm / 12.7" x 18.9" 323 x 1252mm / 12.7" x 49.2" (when using optional banner sheet tray)
Paper Weight:	1st Tray (std) 52 - 300gsm 2nd Tray (std) 52 - 256gsm Optional: A3/DLT/LCT 3rd Tray 52 - 256gsm 4th Tray 52 - 360gsm 5th Tray 52 - 256gsm Optional: Vacuum Feed LCT All Trays 52 - 360gsm (Trays 3 - 8) Optional: Bypass Tray 52 - 216gsm
Duplex:	52 - 360gsm

DIGITAL FRONT ENDS

E46-A	
Configuration:	Optional: External
System Version:	Fiery System FS350 Pro
CPU:	Intel i5-6500 (3.2GHz up to 3.6GHz with Turbo)
Memory:	8GB (4GB x 2)
HDD:	1TB
CD-ROM Drive:	Supported DVD RW Drive
Operating System:	Windows 10 Enterprise Systems x64
E86-A	
Configuration:	Optional: External
System Version:	Fiery System FS350 Pro
CPU:	Intel® Xeon® Gold 5118 processor, 2.3 GHz up to 3.2 GHz with Turbo
Memory:	32 GB RAM
HDD:	500GB + 2 x 2TB SATA RAID 0
CD-ROM Drive:	Supported DVD RW Drive
Operating System:	Windows 10 Enterprise Systems x64

TotalFlow Print Server R-62A

Configuration:	Optional: External
CPU:	6th Gen Core i7 - 6700 3.4GHz
Memory:	Standard: 32GB (16GB x 2) Optional: 32GB (16GB x 2)
HDD:	Standard: 1TB SATA x 3 Optional: 1TB x 1
CD-ROM Drive:	Supported DVD Drive
Operating System:	Linux

Other Options

Vacuum Feed LCT (RT5120), Bridge Unit (BU5010), Cover Interposer (CI5040), Multi Bypass Tray (BY5020), Multi Bypass Banner Sheet Tray, Vacuum Feed Banner Tray, BDT Banner Sheet LCT (VX1280,370), Staple Finisher (SR5110), Booklet Finisher (SR5120), Front Edge Trimmer (TR5050), High Capacity Stacker (SK5040), High Capacity Interposer Tray (HCI3500), Ring Binder (RB5020), Perfect Binder (GB5010), Multi Folding Unit (FD5020), 2-4 Hole Punch units, GBC StreamPunch, GBC StreamWire, Plockmatic Square Back Trimmer (SBT), Plockmatic Long Sheet Booklet Maker (PBM5035/5035s), Plockmatic Booklet Maker (PBM350/500), Plockmatic PowerSquare Booklet Maker, Duplo Booklet Maker, Plockmatic Long Sheet Stacker (MPS)

Workflow Solutions

Ricoh TotalFlow Prep and Production Manager, Ricoh ProcessDirector, BatchBuilder, MarcomCentral, FusionPro VDP Suite, Ricoh Supervisor, InfoPrint Manager. EFI MarketDirect Storefront & Cross Media, Colour Profiler Suite, Graphic Arts Premium Package, Impose, Compose, OL Connect Suite: CGS ORIS Lynx & PressMatcher.

Please Note: Unless stated otherwise the data used in this brochure is based on A4 80gsm standard media.